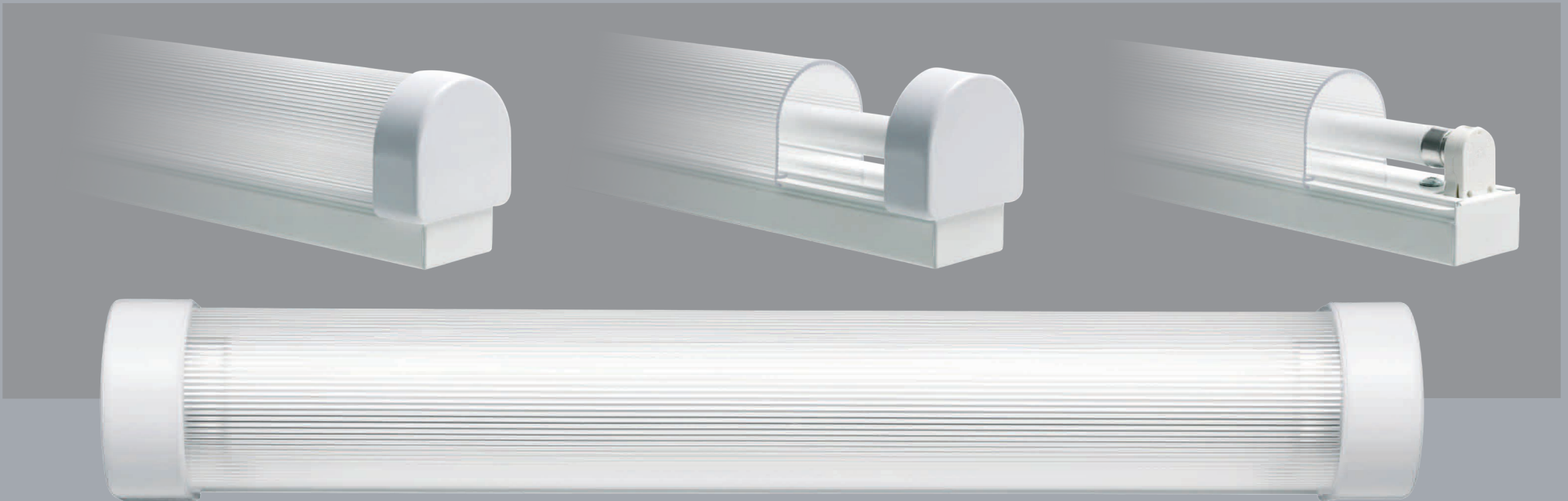


T5 Slim Diffuser Batten

Display lighting

- The T5 Slim Diffuser Batten is available either switched or dimmable with DSI, DALI or 1-10v protocols and can be supplied with Emergency conversions incorporated within the 28w and 35w only. Wiring from behind.



Incorrect wiring/programming will invalidate all warranties.

Emergency conversions available for 28w and 35w only switched. DSI or DALI not 1-10v.

T5 Slim Diffuser Batten Display Lighting



TECHNICAL INFORMATION

LAMP

T5 triphosphor colour 840 as standard, other colour temperatures to order. Typical lamp life T5 20,000 hrs, longer life lamps available as cost option.

FIXING

2 screws through the fitting, (not included).

COLOURS

Coloured sleeves are not suitable for HO (high output) lamps. Any lamp colour or our DDP coloured sleeves (guaranteed fade free) can be specified. Ice blue, sky blue, royal blue, purple, lavender, candy pink, pink, light red, red, orange, light orange, chrome green, leaf green, acid yellow and candlelight. Other filter colours available but not guaranteed fade free.

CONSTRUCTION

Powder coated white steel box section, HF electronic ballast.

WIRING AND CONNECTIONS

All internal wiring 1mm and 1.5mm solid. External wiring if supplied 1.5mm three core PVC.

OPERATION TEMPERATURE

-20°C – +50°C Please note lamps will run at reduced light output in colder temperatures.

STANDARDS

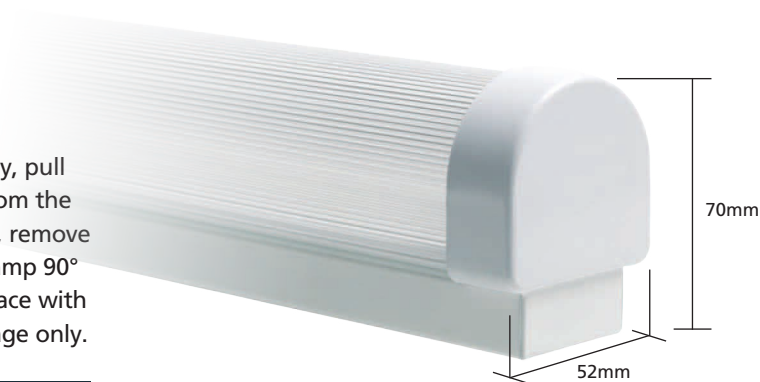
Complies with CE for Europe. Class 1 product, Covers EMC/LV requirements, CE WEEE and ROHS compliant Ballast EN61347, EN 55015, EN60929 EN61547 EN 61000-3-2. Designed for use in ambient temperatures of 25°C IP20.

VOLTAGE

220v-240v AC 50-60Hz, Start up amps 0.98 operating amps 0.07- 0.30 dependant on wattage.

RE-LAMPING

Disconnect power supply, pull white end caps away from the ends of the light fitting, remove the diffuser and twist lamp 90° then lift lamp out. Replace with lamp of the same wattage only.



T5 Slim Diffuser Batten		
Product Code	Overall Length	Lumens
T5 SDB 8w	320mm	480
T5 SDB 14w	583mm	1350
T5 SDB 21w	883mm	2100
T5 SDB 28w	1183mm	2900
T5 SDB 35w	1483mm	3650

T5 Slim Diffuser Batten HO Version		
Product Code	Overall Length	Lumens
T5 SDB 24w	583mm	2000
T5 SDB 39w	883mm	3500
T5 SDB 54w	1183mm	5000
T5 SDB 80w	1483mm	6500

For dimmable option, add protocol version 1-10v, DSI or DALI to product code. Add EC for Emergency Conversion.



Incorrect wiring or programming will invalidate all warranties.

For Product support Freecall 1800 733 113 or Email info@yld.com.au